



## THE PCU DIVIDEND

NEWSLETTER OF THE PROGRESSIVE CREDIT UNION

Volume XVII No 3 • [www.progressivecu.org](http://www.progressivecu.org) • OCTOBER 2009



### **Message from the Treasurer**

It has now been just over a year since the crisis and meltdown of the financial markets. While we can now safely say that the worst is behind us, it is also clear that the recovery will be a slow and painful process.

Over the past year, many of our members sought the safe haven of Progressive Credit Union's Certificates of Deposit and preserved the safety and soundness of their investments. Thank you for your trust and confidence.

Progressive Credit Union is in the process of upgrading its technology systems for the benefit of all members. By June 2010, we will be an "all digital/paperless credit union." Further, as per the adjoining blurb regarding "PayNet," we are providing additional payment option alternatives for members' convenience. And finally, in our next newsletter, you will read exciting details about our new office condominium, located just a few blocks away from our current location.

This year, more than any other, I urge you to take advantage of our Flu Vaccination Program.

The holidays are around the corner. We wish you a joyful, safe holiday season.

Sincerely,

*Robert A. Familant*

Robert A. Familant, *Treasurer/CEO*

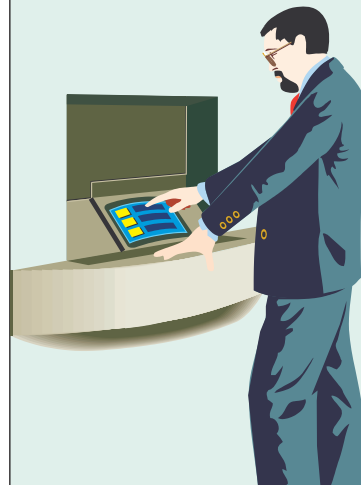


## PAYNET DEPOSIT NETWORK

Progressive Credit Union is now a member of the PayNet Deposit Network. The PayNet Deposit Network consists of over 100 check cashing locations within the five boroughs. Members may access these locations to make deposits or withdrawals to savings or checking accounts using their ATM/Visa Debit Cards. No deposits/payments will be made directly to loan accounts. For deposits intended for loan payments, you must either contact the Member Service department at Progressive Credit Union or use Progressive Credit Union's Online Banking features to transfer funds from your savings to your loan.

**For more information** concerning PayNet; ATM Debit Cards; or Online Banking, please

contact our Member Service Department Monday-Friday 8:30 A.M.-4:00 P.M.





## SCHOLARSHIPS AVAILABLE

### FOR HIGH SCHOOL SENIORS

Progressive Credit Union is again participating in the statewide scholarship program sponsored by the New York State Credit Union League. To be eligible, you must be a member of Progressive Credit Union and a High School Senior. Let the New York State Credit Union League and Progressive Credit Union help you finance your college education.

Applications are now available please contact Roberta H. Donner today at [rdonner@progressivecu.org](mailto:rdonner@progressivecu.org) or call 212-695-8900 Ext 112. All applications must be at the credit union by **Friday, January 22, 2010.**



## IRA Reminder:

On December 23, 2008, President Bush signed into law the Worker, Retiree and Employer Recovery Act of 2008. In addition to significant pension legislation, this law waives the 2009 requirement that IRA owners age 70½ or older during 2009 take minimum distributions. Also, beneficiaries of traditional and Roth IRAs are not required to take minimum distributions from IRAs for 2009. For a copy of the 2009 waiver form and all IRA questions, please contact our IRA department.

## MEMBERSHIP DIVIDEND RATES EFFECTIVE SEPTEMBER 2009

	RATE	APY*
<b>SHARES - TIERED</b>		
\$100-4,999.99 .....	0.75%	0.75%
\$5,000-49,999.99 .....	2.00%	2.02%
\$50,000. + .....	2.25%	2.27%
<b>SHARE DRAFTS</b>		
\$300. + .....	0.75%	0.75%
<b>ALL IRA SHARES</b>		
Traditional .....	2.25%	2.27%
Roth		
Roth Conv.		
Coverdale		

## MEMBERSHIP SHARE AND IRA CERTIFICATES SEPTEMBER 2009

	RATE	APY	DIV. PMT
One Year .....	2.75%	2.78%	Qtrly.
15 Months .....	2.85%	2.89%	Mthly.
18 Months .....	2.85%	2.88%	Qtrly.
Two Years .....	3.00%	3.03%	Qtrly.
Three Years .....	3.50%	3.56%	Mthly.
Five Years .....	4.00%	4.06%	Qtrly.

*\*Annual Percentage Yield*



## PARKING GARAGE

DISCOUNTED PARKING TICKETS ARE  
**\$10.00 FOR TWO HOURS**  
AT  
**PENNMAR GARAGE**  
305-319 WEST 33RD STREET  
BETWEEN 8TH AND 9TH AVENUES



## HOLIDAY CLOSINGS 2009

### COLUMBUS DAY

October 12 • Monday

### VETERANS' DAY

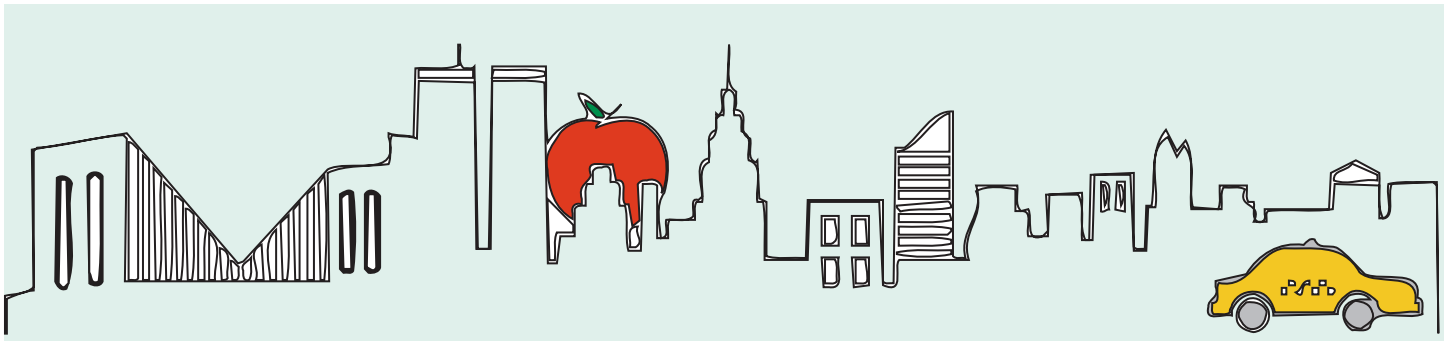
November 11 • Wednesday

### THANKSGIVING DAY

November 26 • Thursday

### CHRISTMAS DAY

December 25 • Friday



## PROGRESSIVE CREDIT UNION

370 SEVENTH AVENUE • SUITE 1400 \* NEW YORK, NY 10001-3900 • 212.695.8900

### PROGRESSIVE CREDIT UNION

presents:

# 14th Annual **FREE** **FLU VACCINATION PROGRAM**

for all members and one immediate family member

You will be seeing Dr. Jeffrey Friedman at the Murray Hill Medical Group for your **regular** flu inoculation.

**We will not be offering the N1HI swine flu vaccination.**

## **All you need to do is SHOW UP!**

You do not need to call in advance, nor do you need to make an appointment.

**When: OCTOBER 5 — DECEMBER 3**

Doctor's hours are Mondays THRU Thursdays, 10AM-5PM

*Please note: There will be NO inoculations on Fridays and NO inoculations on Thanksgiving, Thursday, Nov. 26*

**Where:** The Murray Hill Medical Group  
317 East 34th Street, 10th Fl., New York (between 1st & 2nd Ave.)  
(the nearest subway is 34th Street at Park Avenue)  
(212) 726-7440

YOU MUST BE 16 YEARS OR OLDER TO PARTICIPATE.

## **IMPORTANT**

**You must bring this newsletter or your Progressive Credit Union statement, which is also enclosed in this envelope.**

## DO YOU RECOGNIZE YOUR NAME? Abandoned Property Notice 2009

New York State requires funds in any accounts that have been dormant for five (5) years to be turned over to the state comptroller. If you know of any of the members listed below, please encourage them to contact Diana Rojas, Extension 137 at the Credit Union office to claim their funds. The deadline for claiming these funds is Friday, October 30, 2009.

### A

Abdin, Mohammad Z.  
Abrahmov, Asher  
Aivaliotis, Chris  
Alsafarjalani, Ali M.  
Alvarez, Carlos C.  
Andreou, Spiridon  
Arias, Ernesto Luis  
Avitan, Michael  
Azad, Parvaiz I.

### B

Balan, Vasile  
Basher, Abul  
Bashir, Shoaib  
Basioni, Khaled A.  
Bednarek, Maria  
Berlianshik, Odelia  
Bonerbo, Charles  
Bonilla, Milton  
Bosque, Gumersindo  
Boyal, Kashmir S.  
Burke, Leven  
Butt, Muhammad M.

### C

Celestin, James  
Cengiz, Fazil  
Cervone, Faye  
Charles, Francois  
Chaudhry, Mustafa  
Cunningham, Kensington  
Cunningham, Shirley

### D

Dearaujo, Helio C.  
Depalo, Robert  
Diaz, Fabio  
Dieujuste, Roland  
Durant, Philippe  
Dzindzihashvili, Ruven

### E

Efraimov, Simha  
Elhefnawy, Mahmoud E.

### F

Finale, Philip

### G

Gitlin, Michael  
Gogas, Elli Kalamaras  
Gonsalves, Franky

### H

Hayat, Shafqat  
Hernandez, Rufino  
Hoque, Azizul  
Hristos, George  
Hussainn, Altaf  
Hyde, Bob

### I

Ibrahem, Assam

### J

John, Ruby

### K

Kanevsky, Igor  
Kaur, Gulbir  
Kaur, Harjit  
Kernizan, Jean Y.  
Khalifa, Refaat A.  
Kim, Chang Tae  
Kim, Seunggho  
Kleidermacher, Harry  
Kohl, Michael  
Kohn, Josef  
Kramer, Melvin  
Krupnick, Alexander

### L

Lakicevic, Miroslav  
LaTorre, Lillian  
Liadi, Dan H.  
Liardi, Robert  
Lipovetsky, Grigory

### M

Madera, Michael  
Manaf, Abdul  
Marcus, Harold  
Melo, Justo  
Mendez, Pedro  
Menezes, Luiz  
Mesquita, Wilson E.S.  
Mishiev, Bilal  
Mo, Byung G.

### N

Neuringer, Philip  
Ng, Thian H.

### P

Pabla, Jasbir  
Paliwoda, Azriel  
Papadopoulos, Marina  
Parmar, Harjit S.  
Pierce, William  
Pinchasov, Josef  
Plotnik, Asya  
Popescu, Mihail Eugen  
Poulos, George  
Priel, Tal

### R

Rasoul, Abdul Walid  
Reyes, Henry  
Rimbau, Margarita  
Rubin, Boris

### S

Sakli, Ozcan  
Sekhon, Prabhjot K.  
Shaboo, Aharon  
Shames, Ronald H.  
Sherman, Shmuel  
Singh Taneja, Guldar  
Singh, Baldev  
Singh, Dalip  
Singh, Gurvinder  
Singh, Harbhajan  
Singh, Inderjit  
Singh, Jagdish  
Singh, Jaspreet  
Singh, Jushyar  
Singh, Sukhdev  
Sirol, Josip  
Skurkovich, Alla  
Slidovker, Dmitry

### T

Tamaiev, Josef  
Tan, Sui Hua  
Tariq, Mohammad  
Tenenzapf, Ira  
Trahanas, Dimitrios  
Tsidavis, Argero  
Tsopanakos, Apotolos  
Tutul, Moynul H.

### V

Vodoff, Vlad

### W

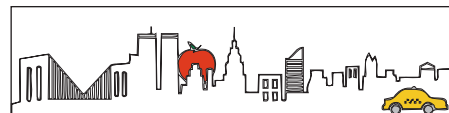
Wu, David P.

### Y

Wu, Davi

### Z

Zaboukos, George  
Zaken, Ichye  
Zekeryef, Omer



## PROGRESSIVE CREDIT UNION

370 Seventh Avenue • Suite 1400  
New York, NY 10001-3900

**212.695.8900**

**[www.progressivecu.org](http://www.progressivecu.org)**

Administrative/Legal Fax:  
212.695.0760

Executive Fax:  
212.868.9351

Loan Processing Fax:  
212.695.0759

Member Service Fax:  
212.695.6377

### Board of Directors

Brian R. Workman, President  
Gerald Shulman, Vice President  
Robert A. Familant, Treasurer  
Joel A. Slomon, Secretary  
Deborah Chassen, Director

### Supervisory Committee

Arthur C. Meisel, *Chairman*  
Gary S. Parker, CPA  
Hanita Schneiderman

### Auditors

BDO Seidman, LLP  
Certified Public Accountants

### PCU Office Hours

Monday-Friday:  
8:30 a.m.-4:00 p.m.  
Payments accepted from  
8:30AM - 3:30 PM

Payments received after this time  
will be posted the next business day.  
Progressive has a 24 hour automated  
voice mail system for your convenience.



## FREE CANCER SCREENING

Check the website

**[www.foundationforscreening.org](http://www.foundationforscreening.org)**  
for more information.

